



TempTale® GEO Ultra

TempTale® GEO Ultra Dry Ice Probe

Real-time Visibility with Validated Temperature Monitoring to -95°C

The TempTale® GEO Ultra Dry Ice Probe is a global, real-time IoT device that delivers end-to-end real-time shipment location with validated temperature monitoring, key to logistics and quality departments. This device is designed for air and multimodal shipments powered by an alkaline battery. Sensitech is focused on helping customers digitize their supply chain, prevent the loss of shipments with in-transit visibility and alerts, automate and increase compliance, and speed up product release. This device is perfect for very low temperatures down to -95°C to maintain product stability, monitoring temperature close to the product with the probe, inside dry ice shippers. Additionally this probe can be used with ambient applications up to +55°C.

The TempTale® GEO Ultra Dry Ice provides an early warning signal enabling action in the event of a temperature spike, alerts providing visibility into delays, proximity, and rerouting; and additional light events highlight a trailer door or container opening. Data for the entire shipment automatically flows to the system-of-record, easing the burden of receivers and improves compliance. cGXP data for the entire shipment automatically flows to the system-of-record, easing the burden of receivers and increasing compliance.

Key Features and Benefits

- Real-time location and validated temperature visibility -95°C to +55°C
- Provides real-time temperature, light and location notifications via secure, web-based software application, to prevent and manage risks due to temperature excursions, delays, rerouting, and more
- Validated cGXP time and temperature data flows automatically to ColdStream® Select for product release decisions, designed to meet Life Sciences FDA 21 CFR Part 11 and EC Annex 11 regulatory requirements
- LTE Cat-M1 (4G) with 2G fallback cellular coverage provides communication globally
- Alkaline, non-lithium battery (no IATA Dangerous Goods label required)
- Arrives fully charged with simple push-button start for easy deployment
- Flexible configurations optimized for battery efficiency and expanded trip lengths; for longer trips see TempTale® GEO Ultra Extended products
- Sensors detect probed temperature and light to support a variety of applications

- Up to six software alarm configurations, using any combination of alarm types: High/Low temperature limits; Single or Cumulative
- Each individual device is 3-point NIST® calibrated, providing a Certificate of Calibration
- Secondary download via wireless NFC; TempTale® Mobile App supports iOS and Android
- No-worry returns; recycling encouraged and supported

Sensitech's sustainable single use model is simple and easy. Sensitech encourages recycling and reuse by returning devices to Sensitech. Sensitech provides on-demand ordering, eliminating the need for customers to be constrained to their pool of device inventory.

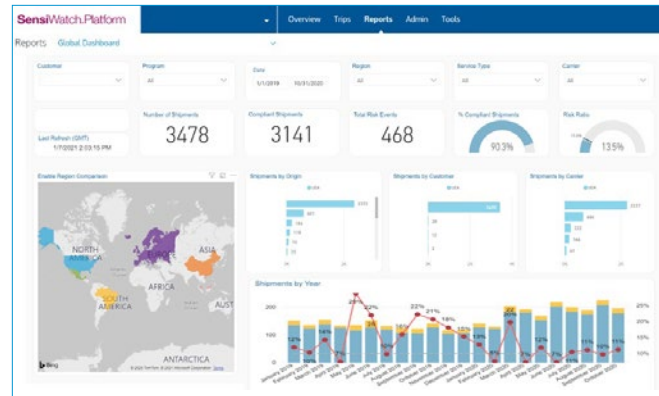


TempTale® GEO Ultra

The SensiWatch® Platform provides end-to-end visibility and alerts from the cloud. Take advantage of real-time shipment data and notifications such as:

- delays and rerouting
- proximity of arrival
- trailer door opened
- early warnings that temperature is trending in the wrong direction

Automatic upload of time and temperature records to ColdStream® Select provides full traceability and system-of-record for quality to speed product release. Solution dashboards, analytics and mobile app help manage to KPIs and drive continuous supply chain improvements.



TempTale® GEO Ultra Dry Ice Probe Specifications

Monitor Recording Option	Sustainable Single Use Only; Sensitech manages reuse requirements
Certified Modes of Transport	Air, Road, Rail, Ocean
Sensor Types	Temperature, light
Probe Temperature Measurement Range	-95°C to +55°C (Single Sensor, Probe placed inside dry ice environment; can be used as an ambient probe)
Core Device Operating Range	-10°C to +55°C (Core device stays outside of dry ice environment)
Temperature Accuracy Range	±1.5°C from -95°C to +55°C
Software-based Alarms	<ul style="list-style-type: none"> • Software up to 6 multi-alarms → alarm is triggered when temperature exceeds set limits • Single-Event (Continuous) or Cumulative
Temperature Accuracy Certification	3-point NIST® Traceable Certificate of Calibration
Temperature Measurement Responsiveness	Meets the requirements of <USP> 1118 and EN12830
Temperature Sensor Sample Interval	Programmable 5 minutes to 2 hours
Light Sensor	0-100%
Cellular	LTE Cat-M1 (4G) \ 2G, Cellular triangulation
Memory	5,000 data points per sensor
Battery Type	Alkaline (non-replaceable)
Operating Life	30 days; Configurable based on reporting interval; for longer life, please see TempTale® GEO Ultra Extended products <ul style="list-style-type: none"> • Operating 7 days (15 minute reporting interval) • Operating 17 days (30 minute reporting interval) • Operating 30 days (1 hour reporting interval)
Dimensions, Weight and Probe Length	121.5mm x 115.5mm x 25.5mm; 240 grams; probe length 1.5 meters
Environmental Rating	IP64
Regulatory Certifications	FCC; CE; NOM; Anatel; RoHS; WEEE; RTCA/DO-160
Display Indicators	LED lights indicate Start, Stop, Status
Secondary Download	Near Field Communication with TempTale® Mobile App (iOS and Android)
Software	SensiWatch® Platform; Email or SMS Notifications; ColdStream® Select 2.1+; TempTale® Mobile App
Cold Chain PDF Report	Software generated PDF report
Minimum System Requirements	Browsers: Chrome, Internet Explorer 11+ (Win 7+), Microsoft Edge, Firefox, Safari (OSX10.12+, iOS 13+), and Android 7+; Adobe® Reader 9.0 or higher

Sensitech has performed all necessary testing and can provide documentation supporting our compliance at your request.

Sensitech Inc. is a global leader in delivering supply chain visibility solutions. Our innovative monitoring products and services help to maintain the quality, integrity and security of our customers' valuable products at every step in their journey, all around the world. For 30 years, leading companies in the food, pharmaceutical, industrial, consumer goods and other industries have relied on Sensitech to help protect their products—and their bottom lines. NIST is a registered trademark of The National Institute of Standards and Technology Agency of the United States Government. iOS is a trademark or registered trademark of Cisco in the U.S. and other countries and is used under license. Android, Chrome, Google Play and Google Maps are trademarks of Google Inc. Microsoft, Windows, Windows XP, Windows Vista, Edge, and Internet Explorer are registered trademarks of Microsoft Corporation in the United States and other countries. Firefox is a registered trademark of the Mozilla Foundation. Apple, App Store, iPad, iPhone, Mac, macOS, OS X and Safari are registered trademarks of Apple Inc. Adobe is a registered trademark of Adobe Systems Incorporated in the United States and/or other countries. Unless otherwise indicated, all trademarks and service marks are the property of Sensitech Inc. Visit www.sensitech.com for additional information. ©2021 Carrier. All Rights Reserved.

Sensitech Inc. • Global Headquarters • 800 Cummings Center • Suite 258X • Beverly, MA 01915-6197
 1-800-843-8367 • +1-978-927-7033 • Fax: +1-978-921-2112 • sensitech.clientservices@carrier.com

sensitech.com



A Carrier Company

03/21

