

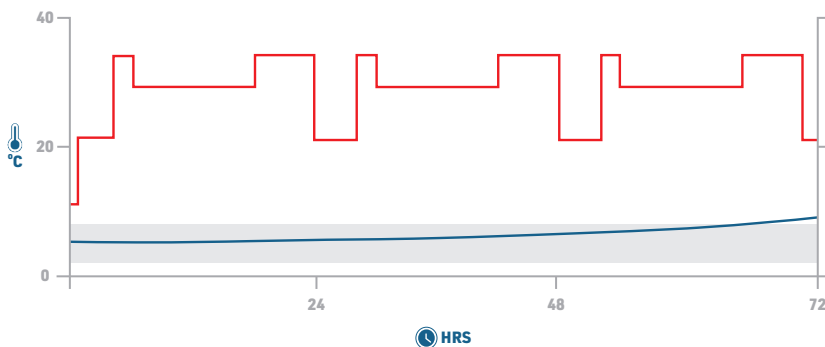
SETTING NEW STANDARDS IN SINGLE-USE BULK SHIPPERS

CoolPall™ Flex is our range of high-performance bulk shippers, available in ISO and EURO footprints. CoolPall™ Flex is highly customisable, allowing users to tailor their shipper to specific shipping lanes or performance requirements, to achieve the optimal thermal protection at lowest overall cost. CoolPall™ Flex PCM comprises polystyrene and VIP (in base) insulation, together with high performance PCM coolants in single or double configurations, in 3 different sizes (narrow bodied aircraft, half height, full height).

WHY CHOOSE COOLPALL™ FLEX PCM?

- A new approach in the design of bulk shippers
- Performance in excess of 140 hours
- Narrow Bodied Aircraft, Half Height and Full Height options
- Payload volumes from 150L to 757L
- ISO & EURO footprints available
- Optimised for ULD use for air cargo applications
- Qualified to ISTA7D Profiles
- Also available in Advance (PCM / VIP) versions for even higher performance

Series 4 CoolPall™ Flex PCM Half Height Single Pod Single Layer EURO +2°C to +8°C ISTA7D HOT 59 hours



COOLPALL™ FLEX PCM

DURATION

72 – 140+ HOURS

TEMPERATURE

SERIES 4
2°C to 8°C

SERIES 22
15°C to 25°C

SERIES 20M
-20°C

VOLUME

150L - 757L



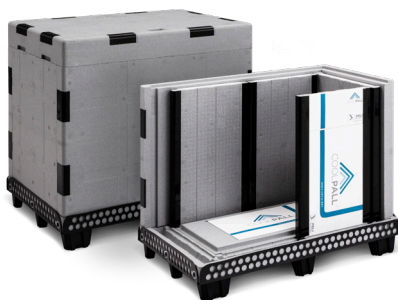
COOLPALL™ FLEX PCM PRODUCT SPECIFICATION

	Name	External dims (mm) W x D x H	Payload dims (mm) W x D x H	Payload (litres)	Weight (kg)
EURO PALLET (1200 x 800mm)	Single Pod NBA	1210 x 802 x 717	928 x 530 x 356	175	47.6
	Double Pod NBA	1210 x 802 x 717	928 x 455 x 356	150	67.9
	Single Pod HH	1210 x 802 x 1110	928 x 530 x 729	359	68.8
	Double Pod HH	1210 x 802 x 1110	928 x 455 x 729	308	96.5
	Single Pod FH	1210 x 802 x 1501	928 x 530 x 1117	549	90.0
	Double Pod FH	1210 x 802 x 1501	928 x 455 x 1117	472	129.3
ISO PALLET (1200 x 1000mm)	Single Pod NBA	1210 x 1002 x 717	928 x 730 x 356	241	70.9
	Double Pod NBA	1210 x 1002 x 717	928 x 655 x 356	216	82.0
	Single Pod HH	1210 x 1002 x 1110	928 x 730 x 729	494	92.5
	Double Pod HH	1210 x 1002 x 1110	928 x 655 x 729	443	113.1
	Single Pod FH	1210 x 1002 x 1501	928 x 730 x 1117	757	114.1
	Double Pod FH	1210 x 1002 x 1501	928 x 655 x 1117	679	144.2

PRODUCT CONFIGURATION



NBA - NARROW BODIED AIRCRAFT



HH - HALF HEIGHT



FH - FULL HEIGHT

FOR MORE INFORMATION ABOUT PELI BIOTHERMAL PRODUCTS, PLEASE CONTACT:

EMEA OFFICE - INFOEMEA@PELIBIOTHERMAL.COM T: +44 (0)1525 243 770

AMERICAS OFFICE - INFOAMERICAS@PELIBIOTHERMAL.COM T: +1 (763) 412-4800 TOLL FREE US: T: +(877) 537-9800

ASIA OFFICE - INFOASIA@PELIBIOTHERMAL.COM T: +65 6681 0095

PELIBIOTHERMAL.COM

ISO17025, ISO9001-2008 Accredited

Golden Hour™, TIC™, Credo™, Credo Cube™, Credo ProEnvision™, Credo Xtreme™, Credo Duracube™, Credo ProMed™, Sherpa Systems™, CoolGuard™ and CoolPall™ are registered trademarks of Peli BioThermal Ltd., its subsidiaries and/or affiliates.



©2021 Peli BioThermal Ltd all rights reserved